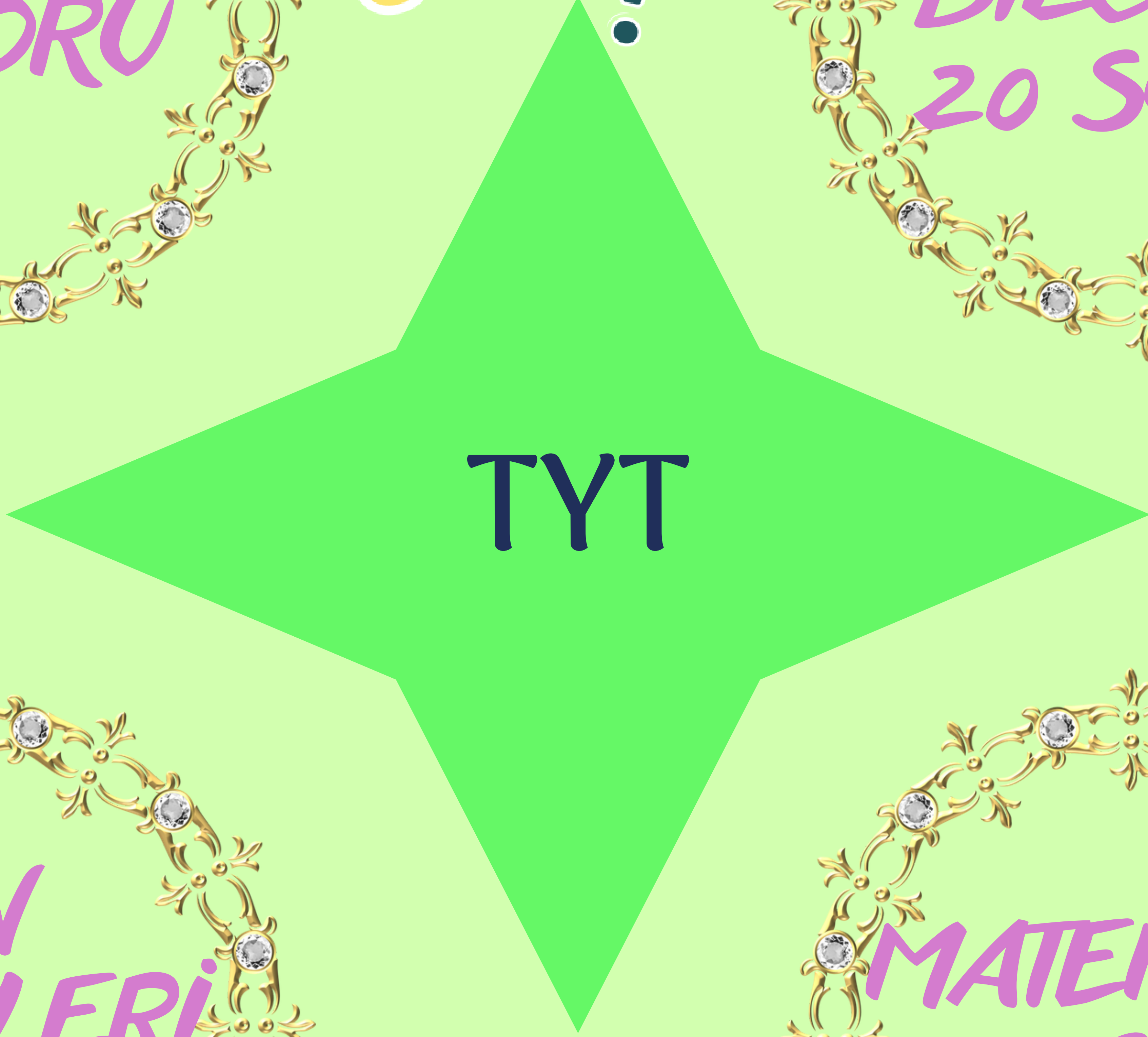


TÜRKÇE  
40 SORU



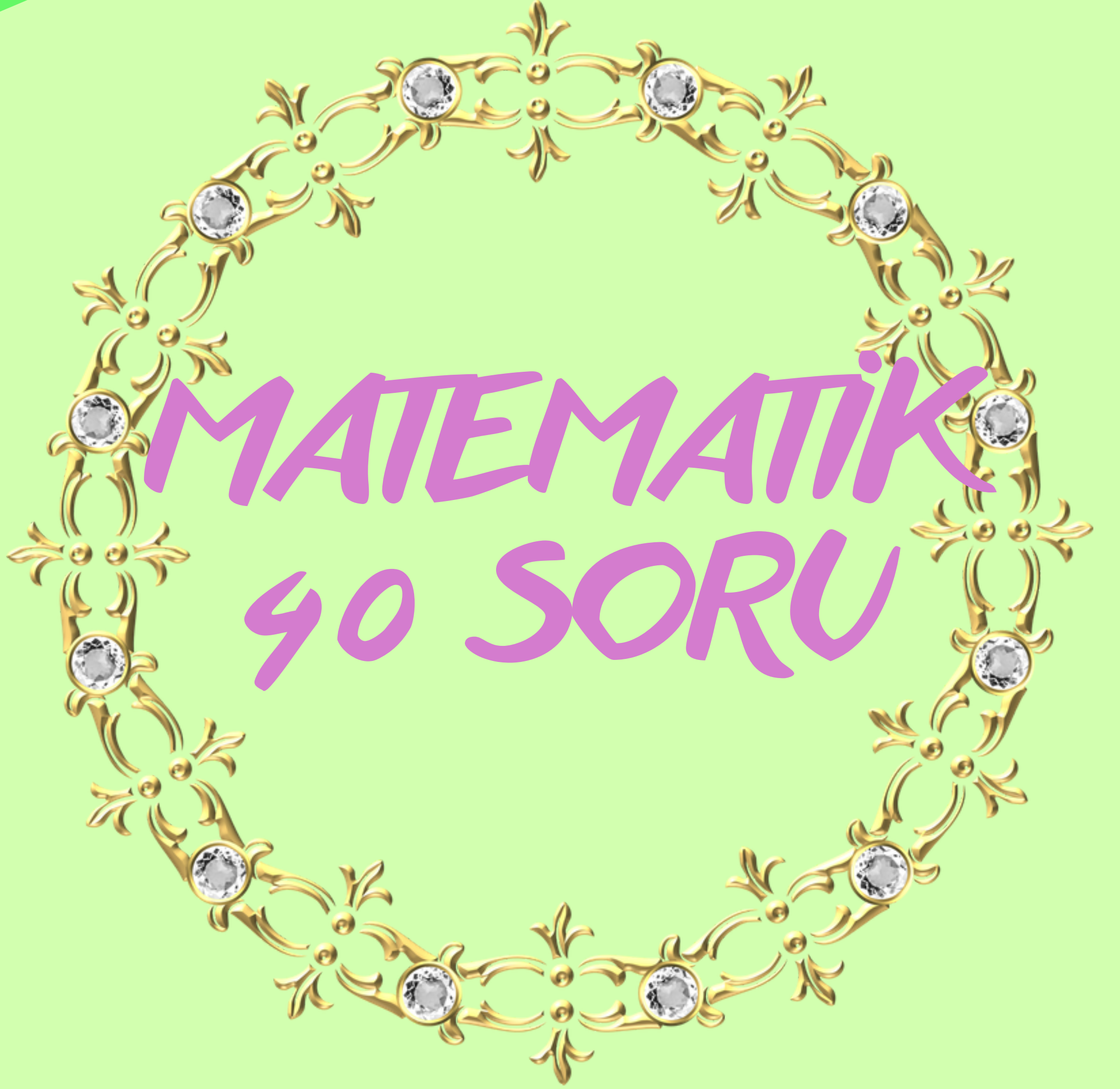
SOSYAL  
BİLGİLER  
20 SORU



TYT



FEN  
BİLİMLERİ  
20 SORU



MATEMATİK  
40 SORU

**1. OTURUM  
CUMARTESİ**

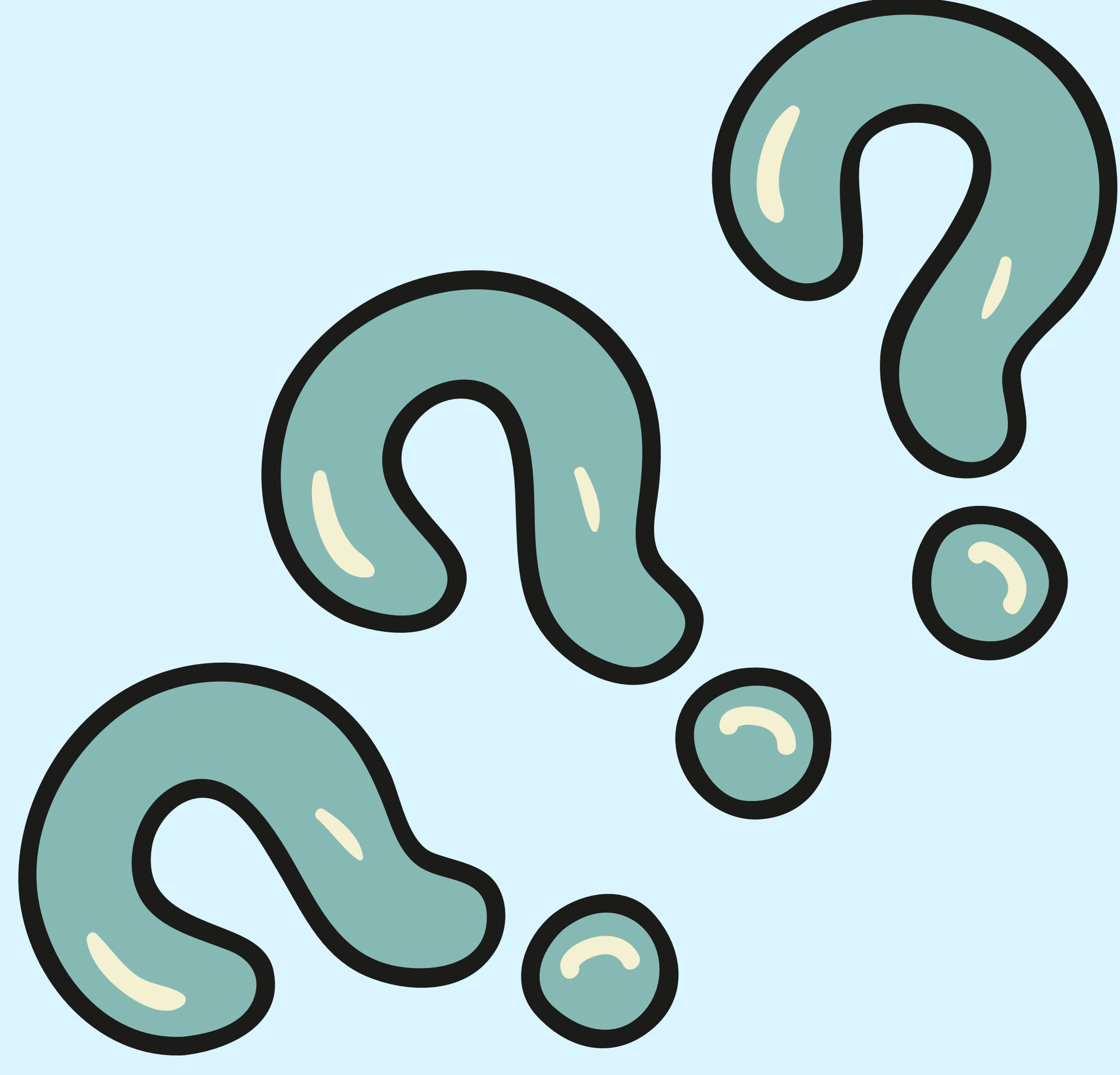
**TYT**

**2. OTURUM  
PAZAR**

**AYT**

**3. OTURUM  
PAZAR  
ÖĞLEDEN  
SONRA**

**YDT**



Edebiyat  
Sosyal  
Bilgiler-1  
40 soru

Matematik  
40 soru



Fen  
Bilimleri  
40 soru

Sosyal  
Bilgiler-2  
40 soru

Arapça  
80 soru

İngilizce  
80 soru

Almanca  
80 soru

YDT

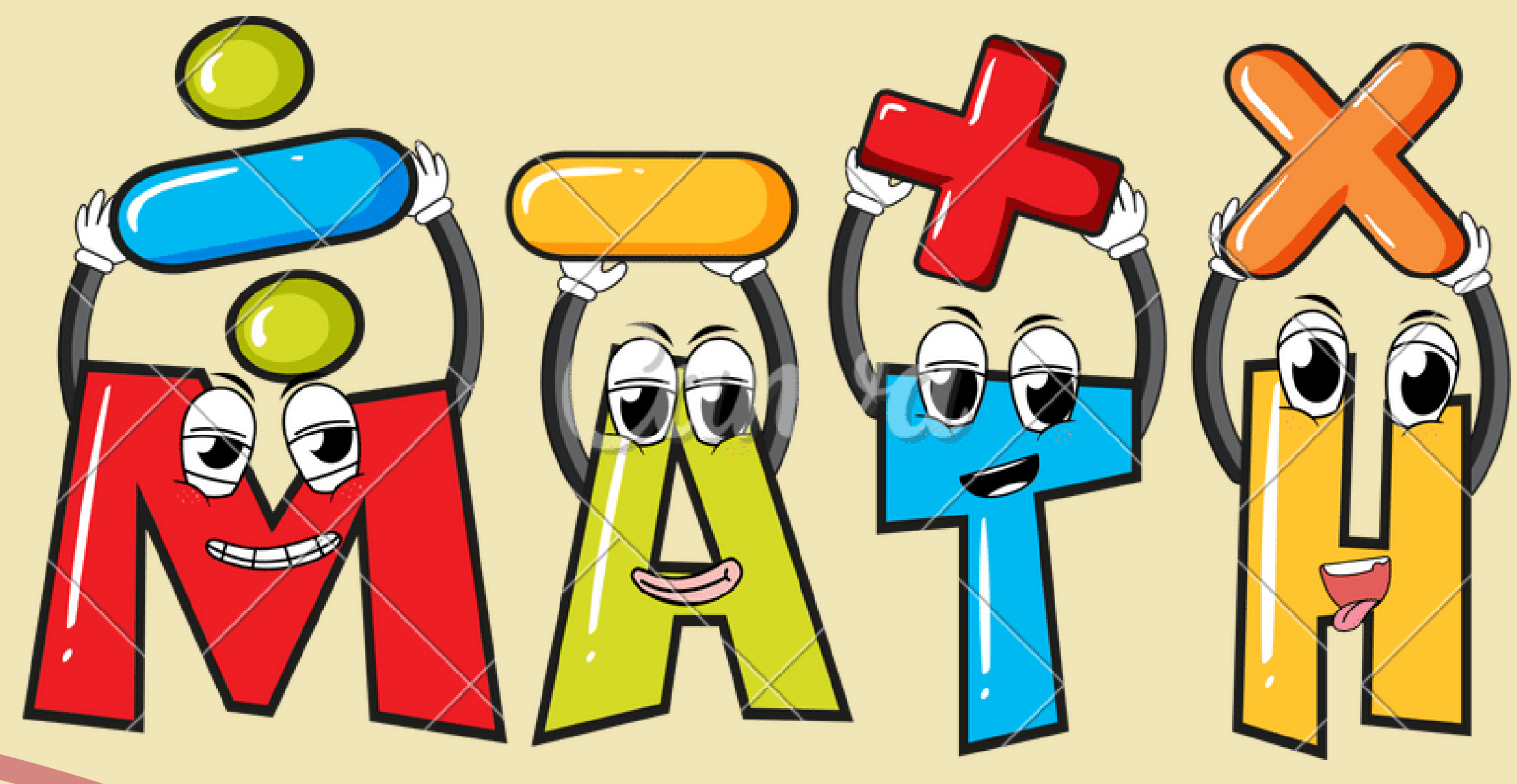
Fransızca  
80 soru

Rusça  
80 soru



Canva

+ % \*



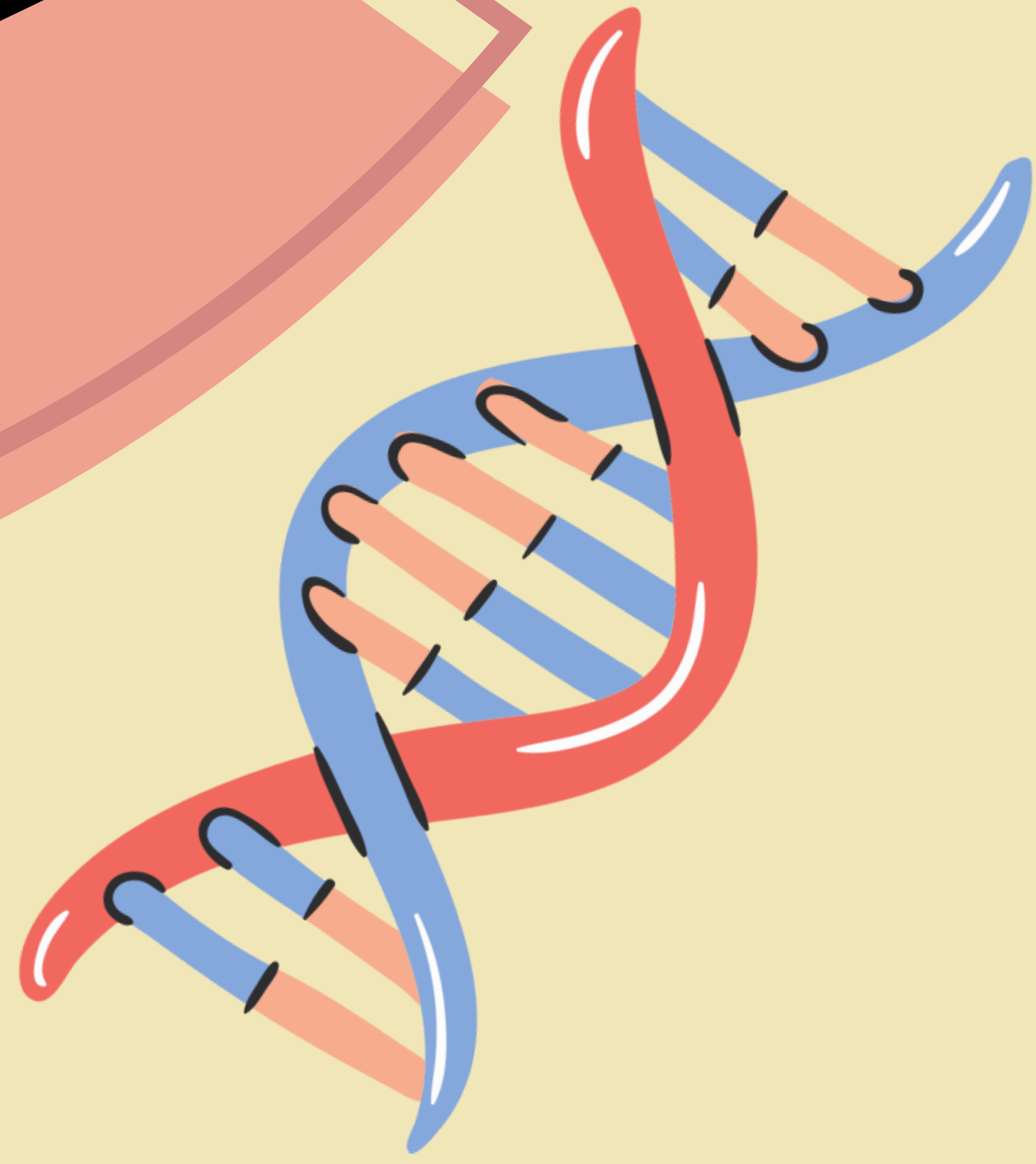
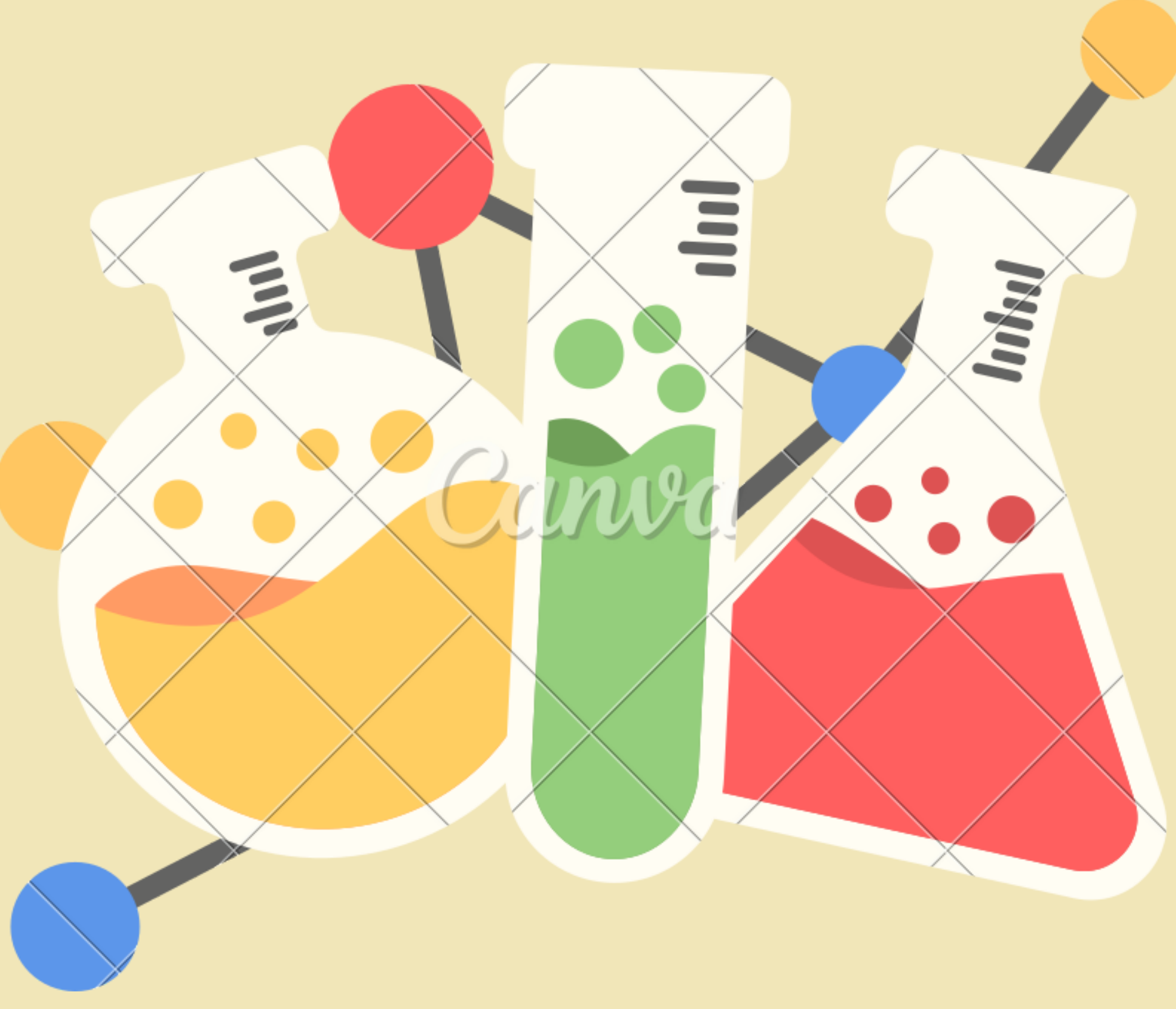
$\pi$

TYT

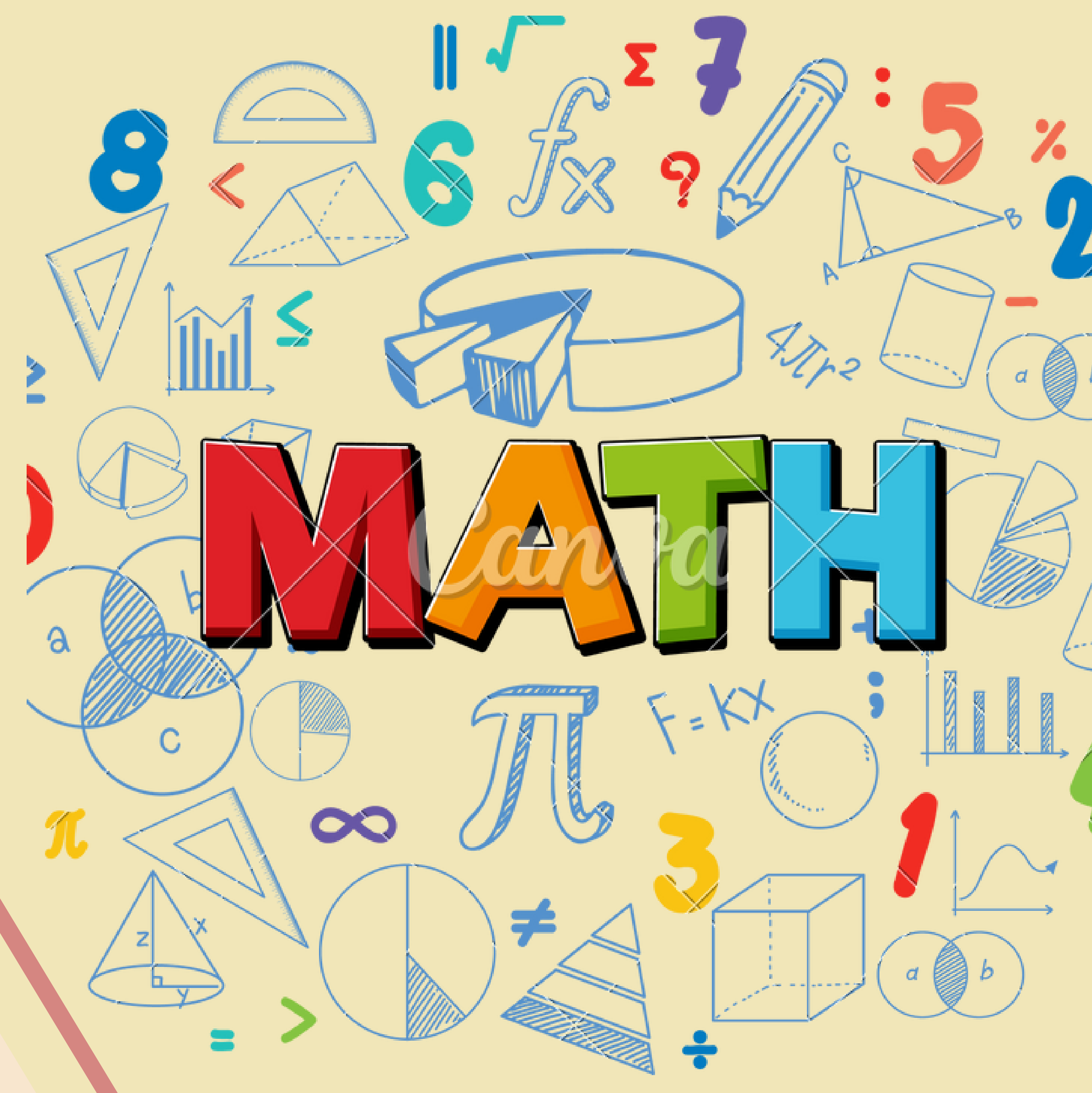
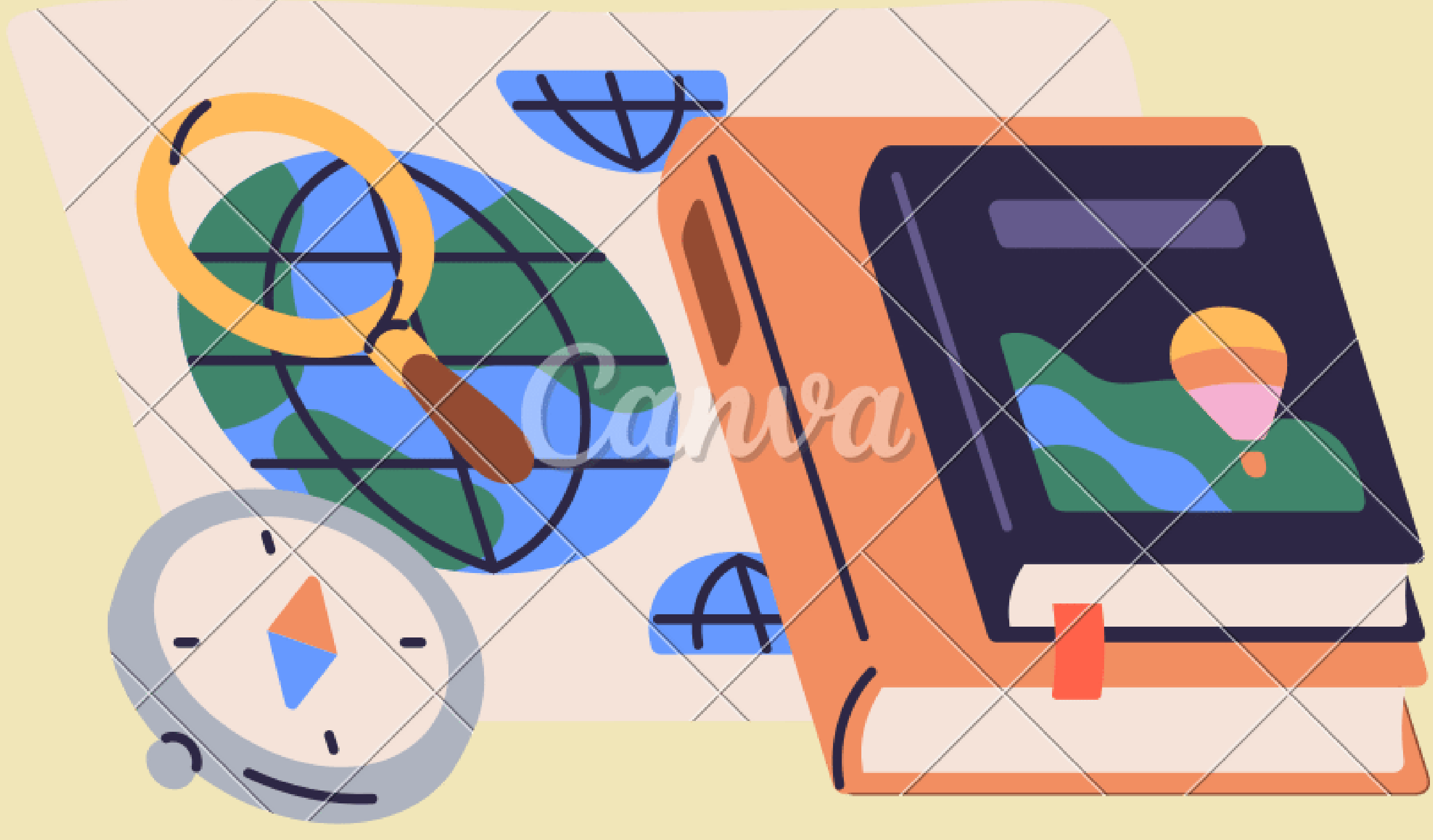
SAYISAL

AYT  
MATEMATİK

AYT  
FEN BİLİMLERİ



Science

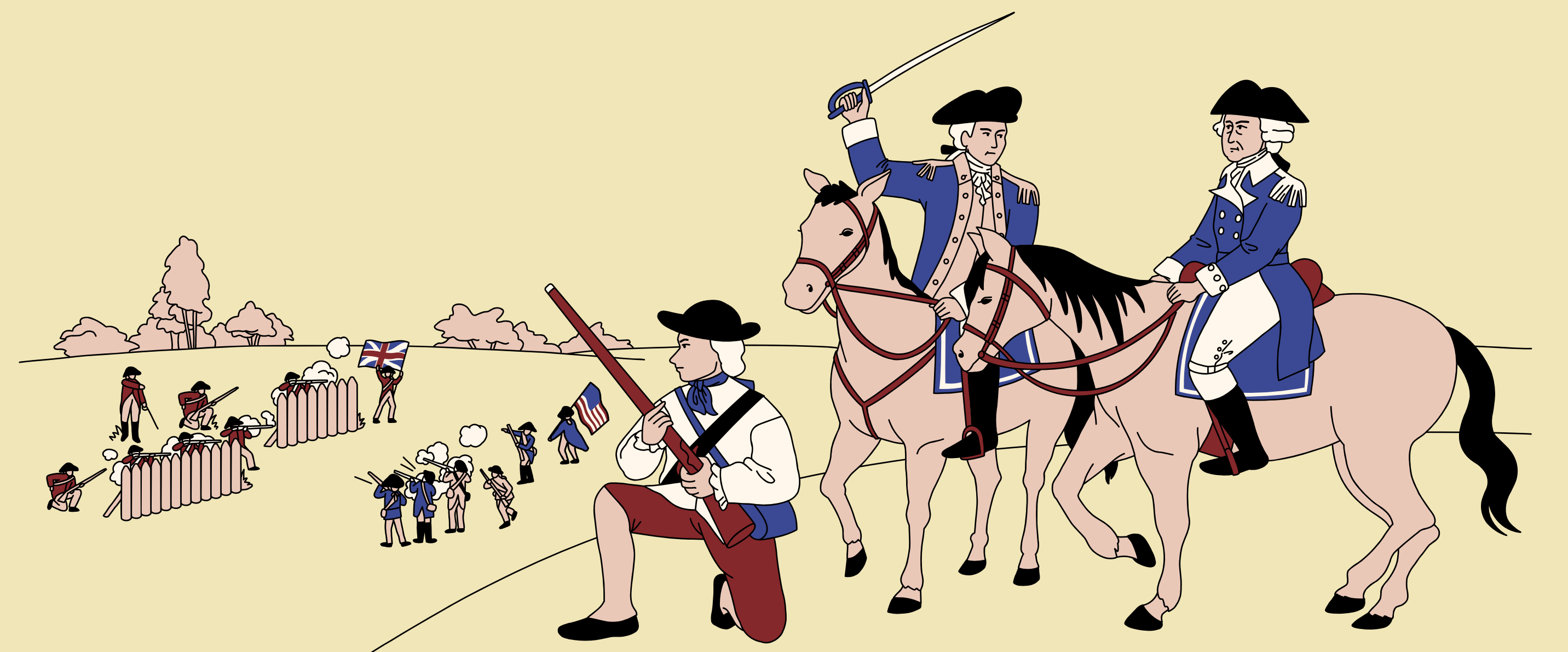
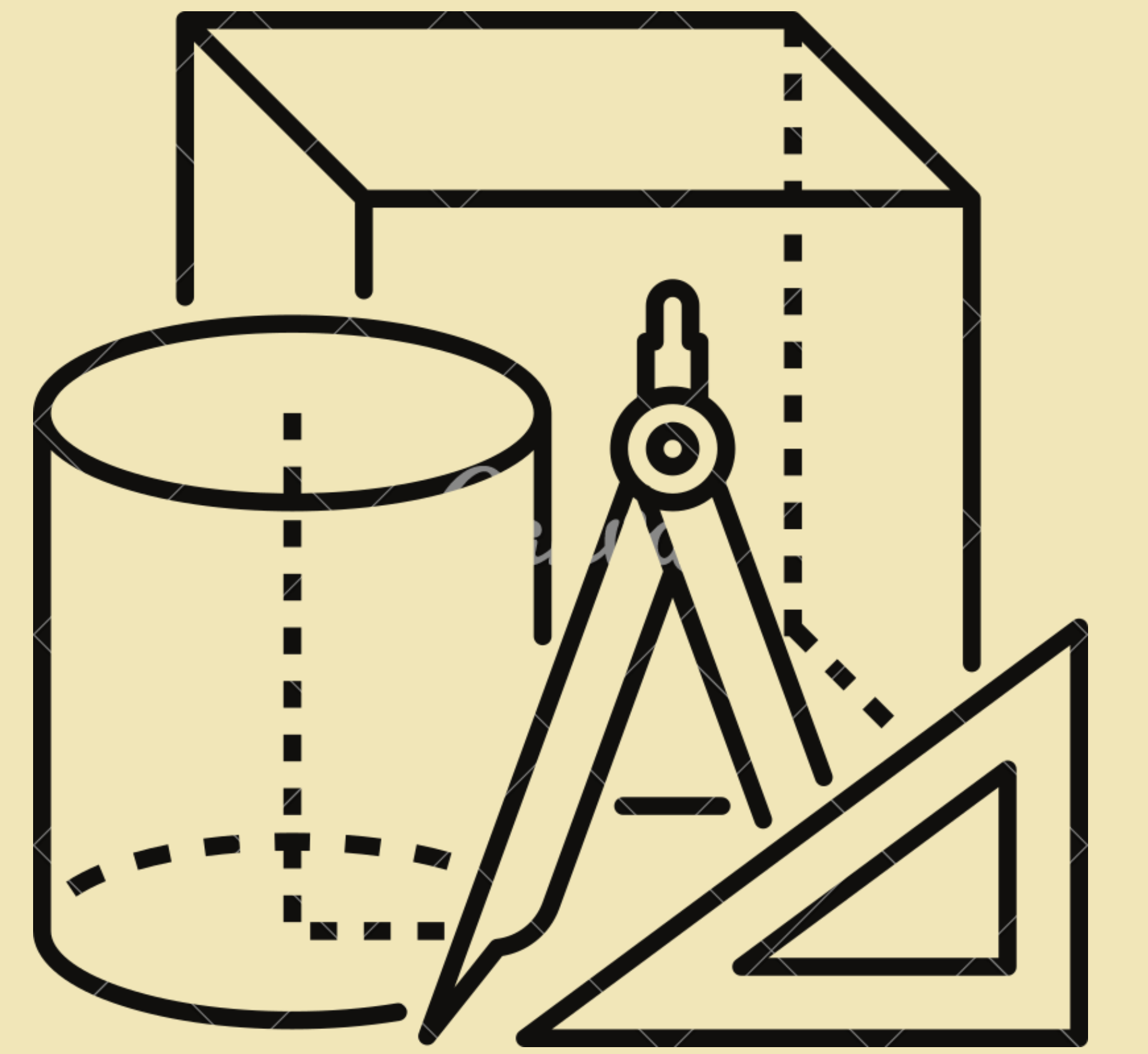


**TYT**

**EŞİT  
AĞIRLIK**

**AYT  
MATEMATİK**

**AYT  
EDEBİYAT  
SOSYAL BİLGİLER  
1**





**TYT**



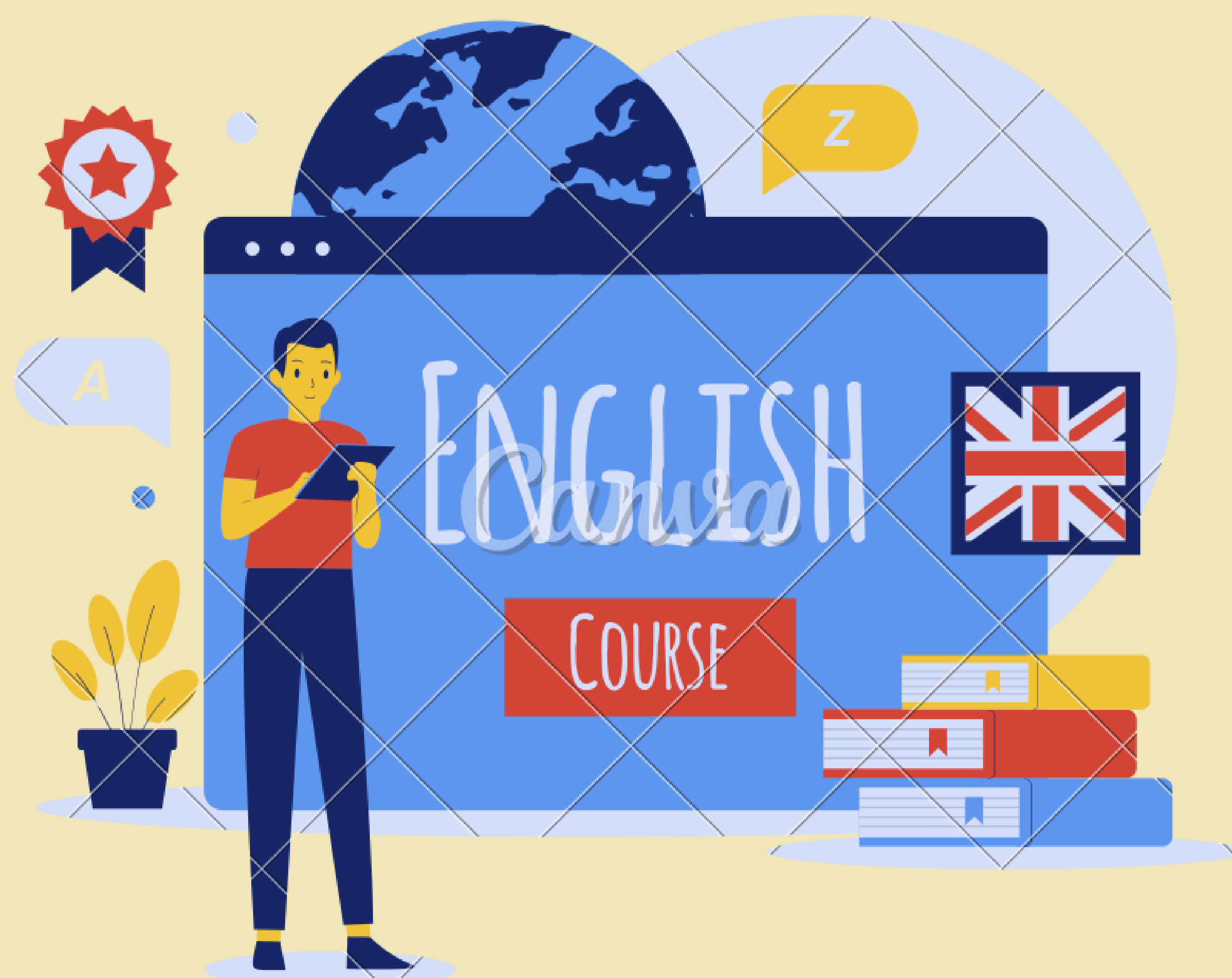
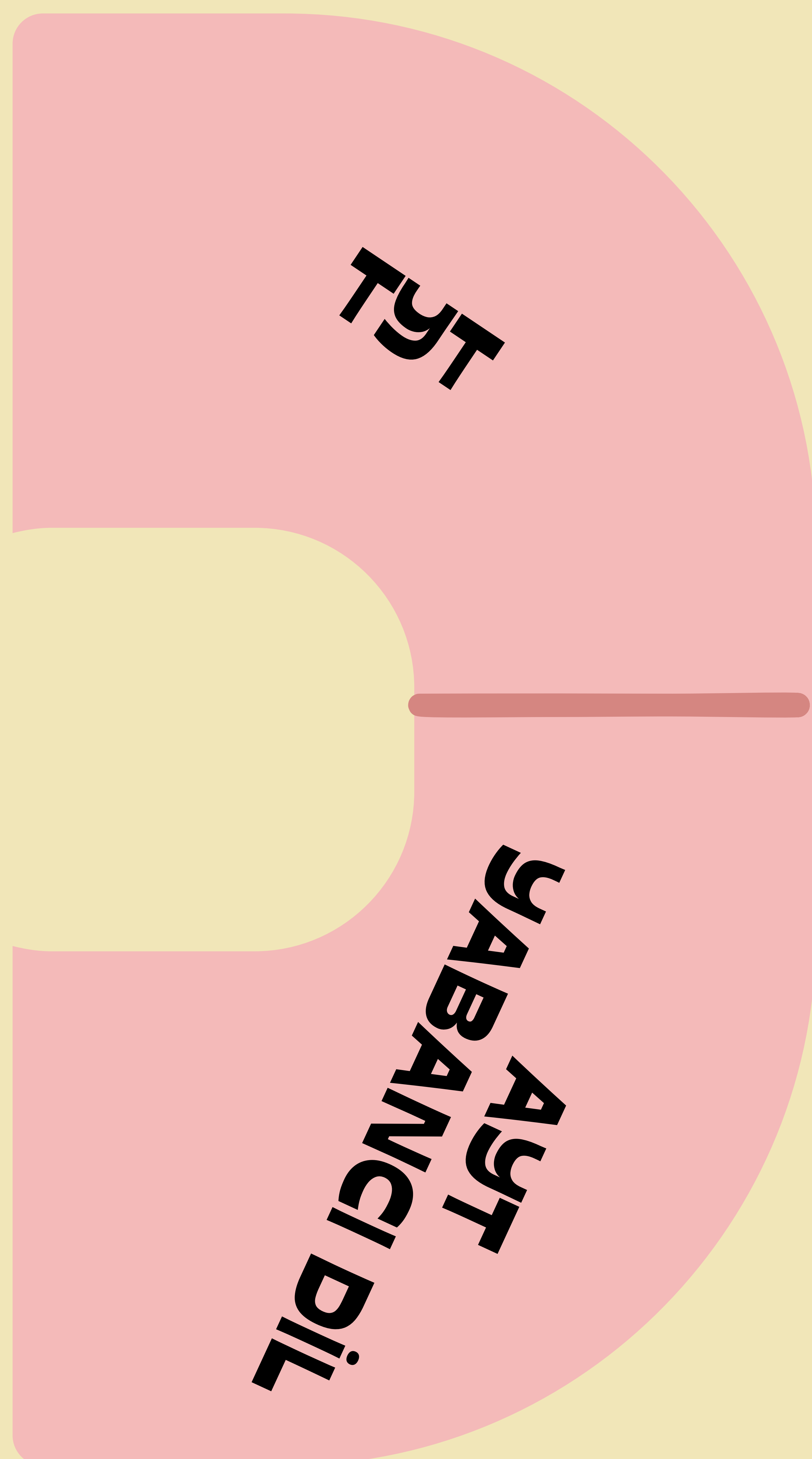
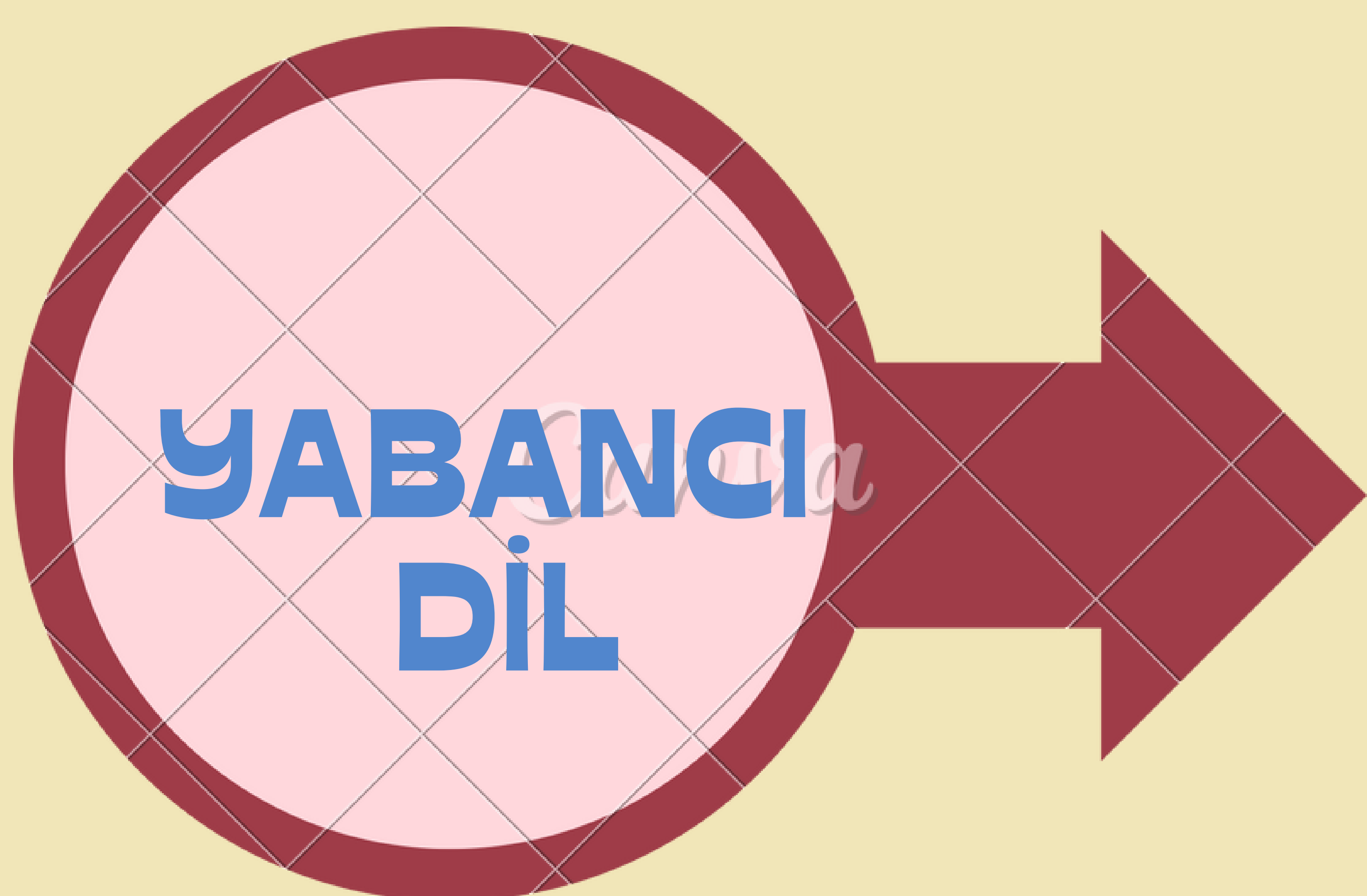
**SÖZEL**

**AYT  
EDEBİYAT  
SOSYAL BİLGİLER  
1**



**AYT  
SOSYAL  
BİLGİLER 2**

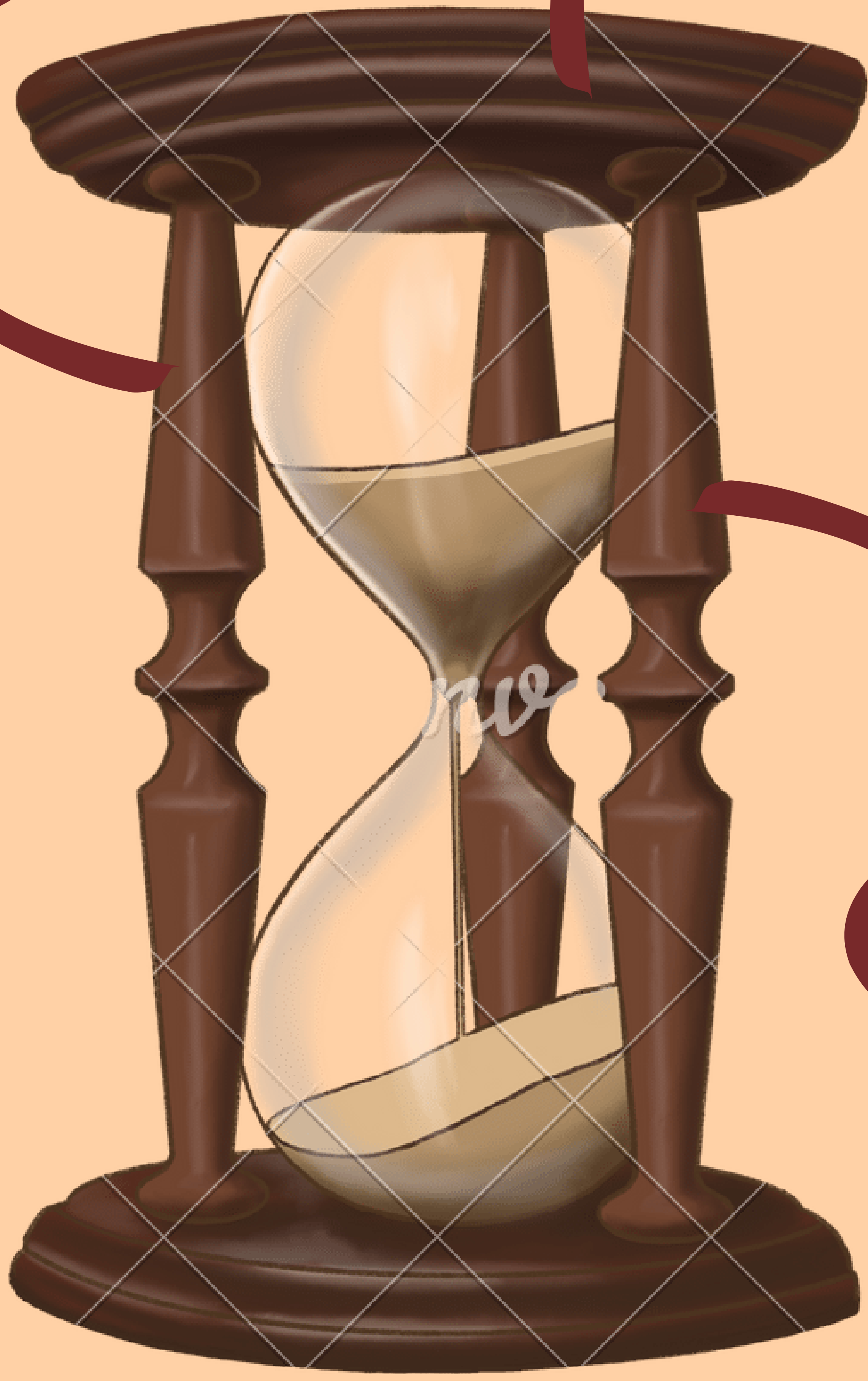
**HISTORY**





TYT  
120 soru  
165 dakika

AYT  
160 soru  
180 dakika



YDT  
80 Soru  
120 dakika



**EK  
PUAN**



Yapılan netler ile elde edilen puandır.

**YERLESTİRME  
PUANI**



Ham puanın üstüne OBP eklenmiş halidir.

# OBP Nedir?



**Ortaöğretim Başarı Puanı'dır.**

**Öğrencinin diploma notu  
ile 0,6'nın çarpılması ile  
elde edilen sonuçtur.**



**Örnek:  
diploma notu  
90 olan  
öğrenciye  
 $90 \times 0,6 = 54$   
OBP eklenir.**